



INDIAN SCHOOL WADI KABIR INTERNATIONAL PARENTS' ORIENTATION

LOWER SECONDARY 2023-24



Dr S. C. Misra – Level Coordinator



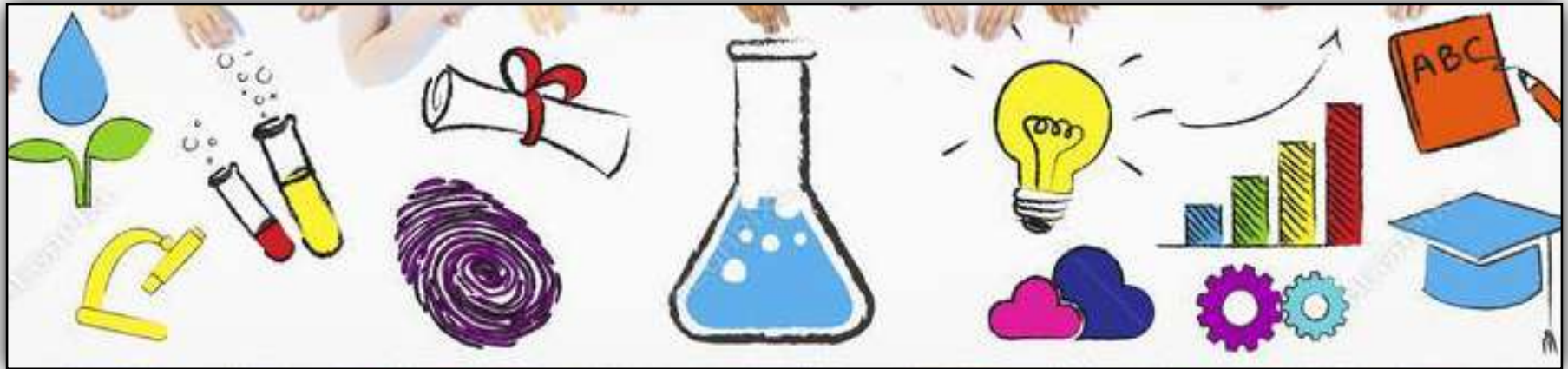
SCOPE OF ORIENTATION

- Welcome
- Updates on Academics
- Non academics
- General
- ABLE department
- Address by Our Principal



MISSION

"To provide dynamic educational experience, that prepares learners for life."





VISION

"To nurture the inquiring minds of our young students, in order to enable them to become lifelong learners and world citizens who are knowledgeable, self regulated, possess life skills, values and accept diversity in society."





WELCOME NOTE BY:



VICE-PRINCIPAL



SCHOOL TIMINGS

Grade 6 to 8



Sunday to Thursday

- 8:15am to 03:00 pm

House Activity (Wednesday) - 1:45pm to 3:00pm

Clubs (Thursday) - 1:45pm to 3:00pm



INTERNATIONAL CURRICULUM

The Cambridge approach supports school to develop learners who are : **(RICER)**

- **Responsible** - *for themselves, responsive and respectful of others*
- **Innovative** - *and equipped for new and future challenges*
- **Confident** - *in working with information and ideas of their own and those of others*
- **Engaged** - *intellectually and socially and ready to make a difference in the world*
- **Reflective** - *as learners themselves, developing their ability to learn*



Focus on the Cambridge Learning Objectives

Specific	Measurable	Attainable	Relevant	Time-bound
S	M	A	R	T
G	O	A	L	S
What <i>exactly</i> are you trying to achieve?	How will you know when you've achieved it?	Is it genuinely possible to achieve it?	Does it contribute to your agency's revenue growth?	When do you want to achieve this by?





LEARNING AT ISWKi...

1) Is learner centric where the learners.....

Set Goals

Peer Assess

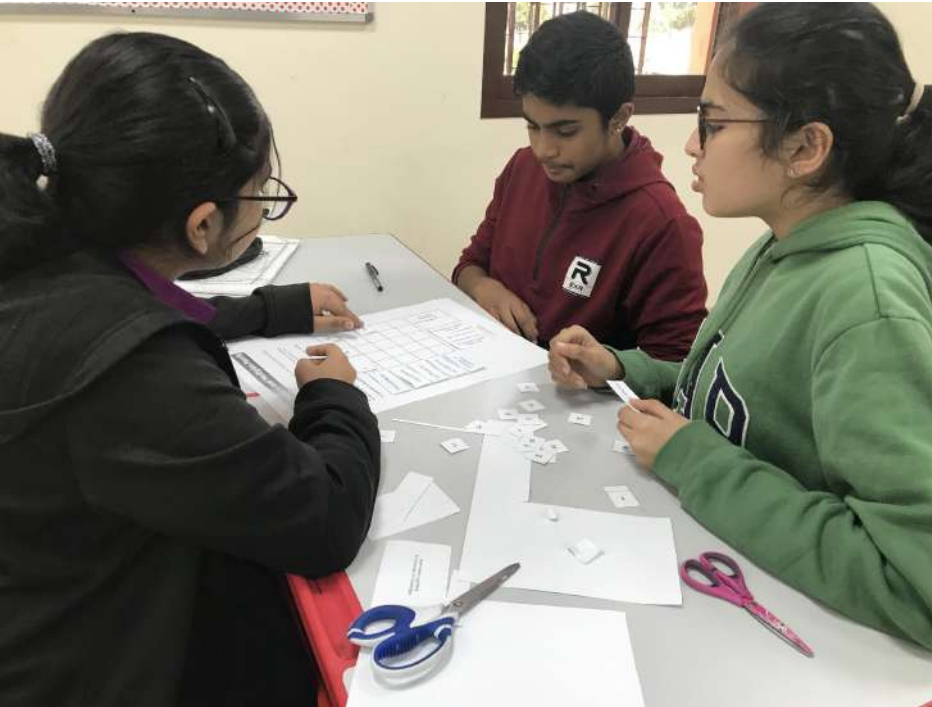
Mentor

Submit Work

Inspire



2) Develops Critical Thinking & Collaborating...





LET'S UNDERSTAND CORE SUBJECT EXPECTATION

ENGLISH



Cambridge Lower Secondary English empowers learners in their application of English, and encourages lifelong enthusiasm for reading, writing and spoken communication.

The **learning objectives** are organised into **three strands**: • Reading • Writing • Speaking and Listening. Grammar is embedded within the Reading and Writing strands.

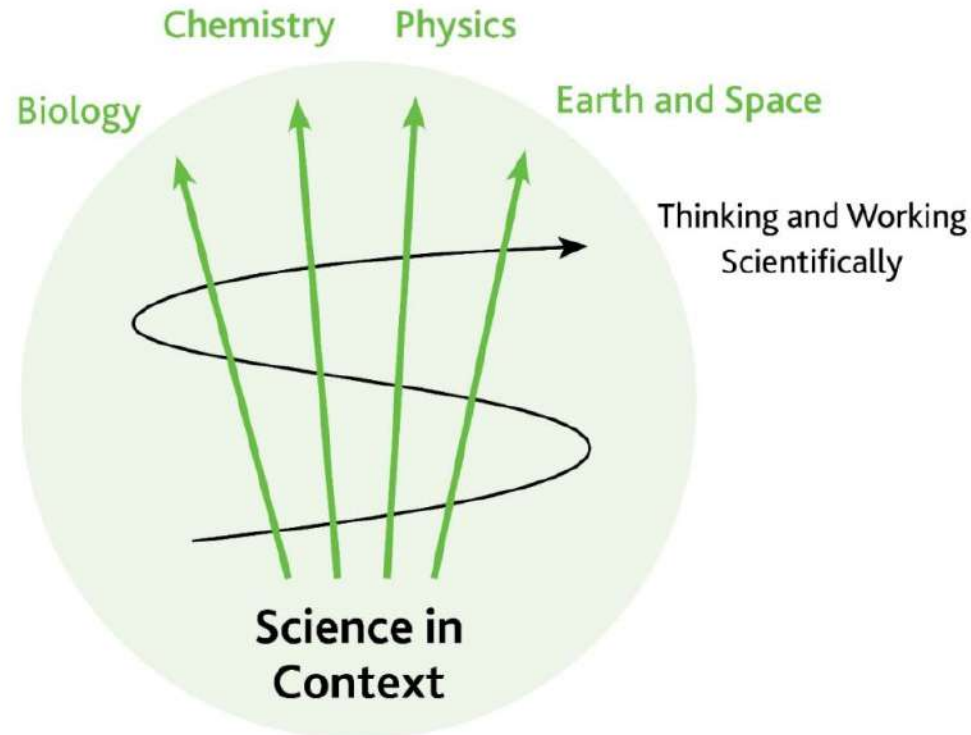
Checkpoint Assessment • Paper 1 -Reading and Writing (non-fiction) 50% • Paper 2 Reading and Writing (fiction) 50%. Grammar is assessed within both papers.

Assessment objectives- Vocabulary and language, Structure of texts, Interpretation of texts, Appreciation and reflection, Creation of texts, Group work and discussion



LETS UNDERSTAND CORE SUBJECT EXPECTATION

SCIENCE





LETS UNDERSTAND CORE SUBJECT EXPECTATION SCIENCE

Cambridge Lower Secondary Science supports learners in developing lifelong curiosity about the natural world and enables them to seek scientific explanations to the phenomena around them.

- Active learning
- Group learning
- Discussions
- Inquiry-based learning
- Questions and reflections
- Lab work

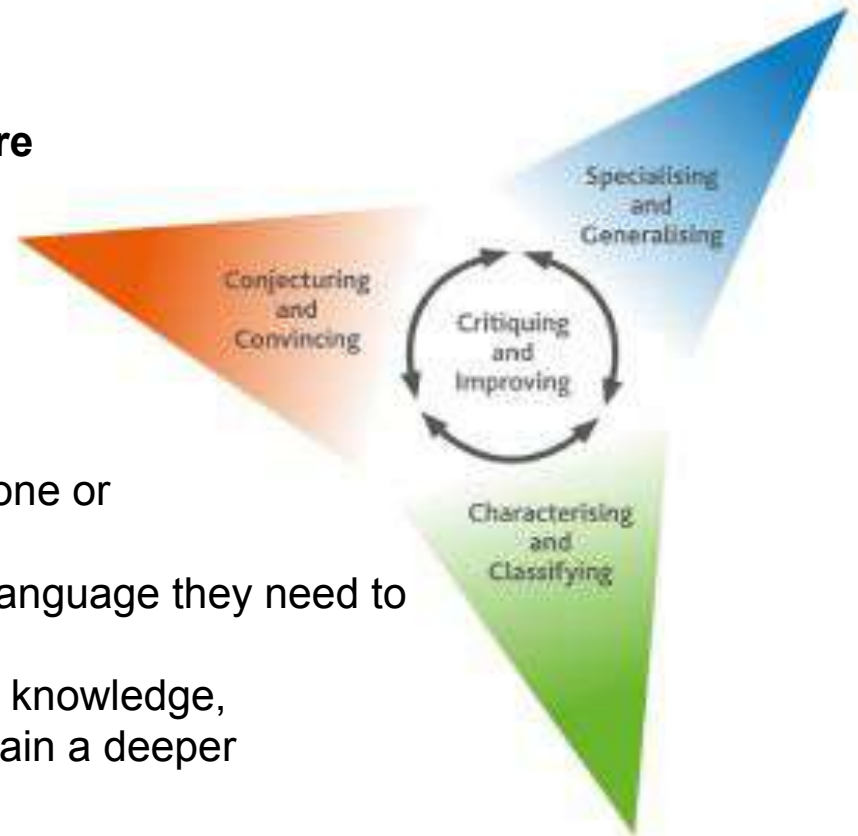


LETS UNDERSTAND CORE SUBJECT EXPECTATION MATHEMATICS

Mathematics has eight characteristics that are presented in four pairs:

- 1) *Specialising and Generalising*
- 2) *Characterising and Classifying*
- 3) *Conjecturing and Convincing*
- 4) *Critiquing and Improving.*

- A high-quality mathematics task may include one or more of them.
- The characteristics provide learners with the language they need to think and work mathematically.
- Learners can then decide what mathematical knowledge, procedures and strategies to use in order to gain a deeper understanding of mathematical questions.





Thinking and Working Mathematically characteristic	Definition
Specialising	Choosing <i>an example</i> and checking to see if it satisfies or does not satisfy specific mathematical criteria
Generalising	Recognising an underlying pattern by identifying <i>many</i> examples that satisfy the same mathematical criteria
Conjecturing	Forming mathematical questions or ideas
Convincing	Presenting evidence to <i>justify or challenge</i> a mathematical idea or solution
Characterising	Identifying and describing the mathematical properties of an object
Classifying	Organising objects into groups according to their mathematical properties
Critiquing	Comparing and evaluating mathematical ideas, representations or solutions to identify advantages and disadvantages
Improving	Refining mathematical ideas or representations to develop a more effective approach or solution



TERM BREAK UP....

Grade : 6 to 8

SEMESTER 1

- April 2023 to September 2023

SEMESTER 2

- October 2023 to March 2023





ASSESSMENT

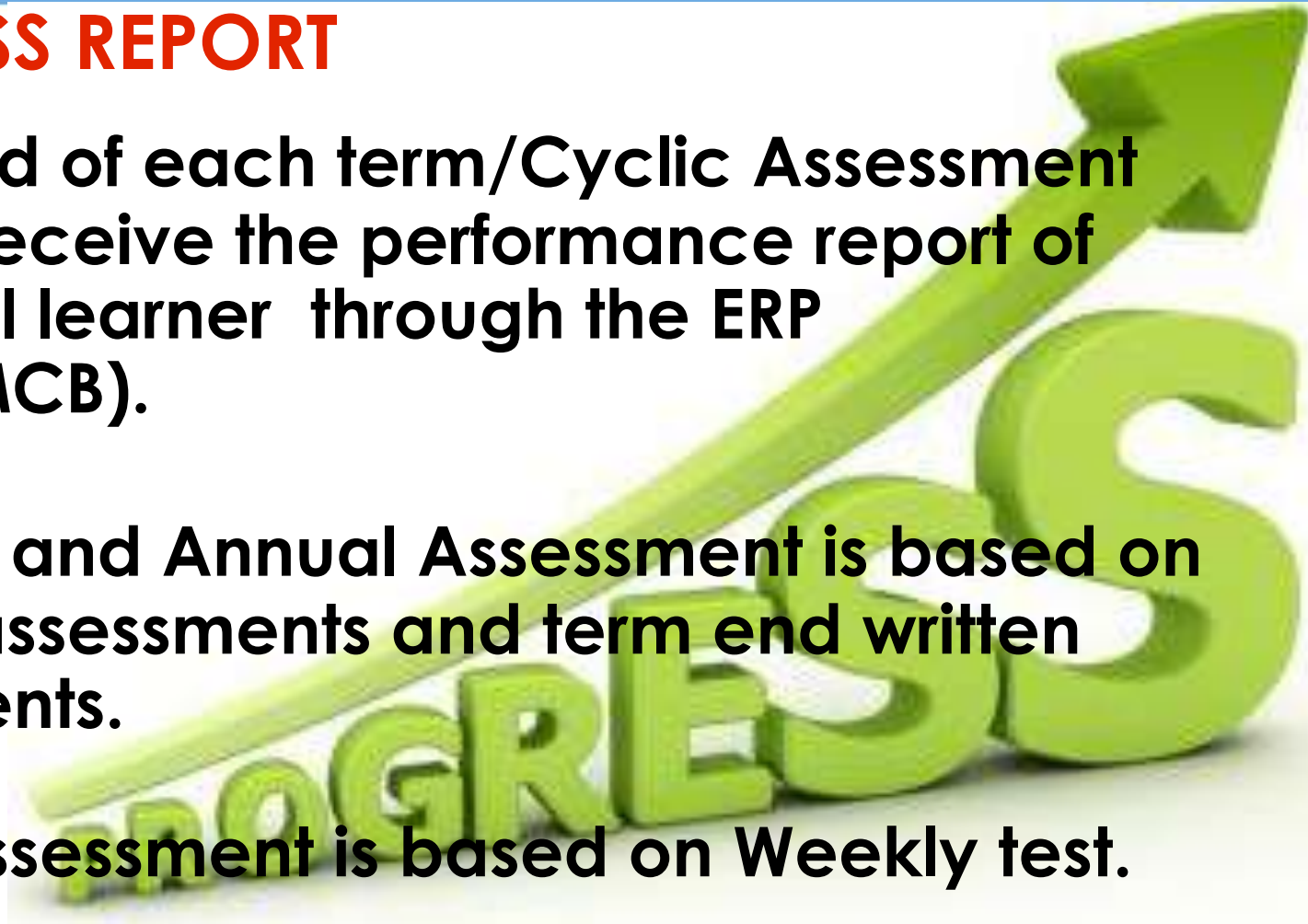
- **Cyclic assessment in the form of weekly test.**
- **Term assessment will be conducted at the end of each Semester.**
- **Check-Point Examination for Grade 8**





PROGRESS REPORT

- At the end of each term/Cyclic Assessment you will receive the performance report of individual learner through the ERP system(MCB).
- Mid Year and Annual Assessment is based on internal assessments and term end written assessments.
- Cyclic Assessment is based on Weekly test.





(A) Internal assessment = 20%

(i) Weekly test = 10%

(ii) Class work + homework + Project = 10%

(B) Term End Assessment (Written paper) = 80%

A + B = 100%



Collaboration....

Collaboration

- 21st October 2023 - Saturday
- 28th March 2024 - Thursday



COMMUNICATION....

Using the communication tab you may raise any concerns or queries related to academics, non-academics, administrative or IT.

- **IT related issues** – it.support@iswki.org / nambi.rajesh@iswki.org
- **Administration concerns** - Manisha@iswkioman.com
- **Exam cell** – examcell@iswki.org
- **Academic concerns** – Concern educator, cc to Class teacher and level coordinator- lower secondary
- **Non academics** – nonacademic@iswki.org (non-academic coordinator)
- **Social Development and Emotional concerns** – specialeducator@iswki.org cc to class teacher



• GENERAL

- Reporting time to school
- School Uniform
- RFID card
- Appearance
- Use of mobile phones in the school premise
- Foul language and unruly behavior



LEAVE POLICIES

- Approval of the leave is subjected to prior intimation, through email or ERP portal(MCB) to the class teacher CC to level coordinator.
- **NO** long leaves are allowed as per the school policy.
- Any leave under medical circumstances will be approved only when an appropriate medical certificate is produced.



WITHDRAWAL POLICY

- An email of the withdrawal with request for the Transfer certificate to be sent to the admin office at manisha@iswkoman.com cc to the class-teacher as advance notice of one month
- Notice period is mandatory failing which the fee is chargeable for the whole quarter.
- 5 working days are needed to complete the procedures.



NON ACADEMICS

FOUR GROUPS

GROUP A	GROUP B	GROUP C	GROUP D	GROUP E
GRADE 1 AND 2	GRADE 3 AND 4	GRADE 5 AND 6	GRADE 7 AND 8	GRADE 9 to AS
Activity Lesson	House Session	House Session	House Session	House Session
Thursday	Wednesday	Wednesday	Wednesday	Wednesday



FOUR -HOUSES

HOUSES:

AGNI

JAL

PRITHVI

VAAYU



NON-ACADEMICS

INTER HOUSE ACTIVITIES



INTER HOUSE SOLO DANCE



INTER HOUSE HINDI SKIT



INTER HOUSE POEM RECITATION



INTER HOUSE ENGLISH DEBATE



NON-ACADEMICS

INTER SCHOOL ACTIVITIES -ISM AKAM





NON-ACADEMICS

INTER SCHOOL ACTIVITIES - MUN & HINDI QUIZ





NON-ACADEMICS

INTER SCHOOL ACTIVITIES - TIMES OF OMAN & IS QUIZ



Bagged Runners Up and Winners in Sub Junior Categories





NON-ACADEMICS ASSEMBLY





NON-ACADEMICS EXCURSION





NON-ACADEMICS

NIGHT STAY





NON-ACADEMICS CLUBS





NON-ACADEMICS

ANNUAL DAY





ACADEMIC YEAR 2023-24

A.B.L.E DEPARTMENT

ADVICE. BELIEF. LEARN. ELEVATE
COUNSELLING & SPECIAL EDUCATION



INDIAN SCHOOL AL WADI AL KABIR INTERNATIONAL



Major Areas



**Behavioural
Counselling**

**Career
Counselling**

Special Needs



MENTAL WELLNESS IS OUR PRIORITY



We assist with:

- Academic support & planning
- Personal concerns
- Discipline issues
- Social situations

Referrals:

- Self referral
- Teachers, parents, and friends



BEHAVIOR AND CAREER COUNSELING

Individual sessions for
Emotional needs

Socio-Emotional Sessions

Career Counseling
session- Group

Career counseling
sessions- Individual





When should I meet the counselor?

- **Want to share an experience/feelings**
- **Feeling depressed and/or lonely**
- **Feeling stressed and/or anxious**
- **Feeling angry and/or frustrated**
- **Want to improve grade(s)**
- **Confused about careers/colleges**
- **Relationship/peer issues/conflicts**
- **Personal issues (loss of a loved one, etc.)**
- **Or when you just feel like it... YOU ARE ALWAYS WELCOME!!!**





Keeps
my
Secrets





+



How can you talk with your counsellor?

- ✓ Online Referral
- ✓ Email Us
- ✓ Walk-in (ONLY after seeking permission from your class teacher/subject teacher)





✉ sethi.aanchal@iswki.org,
neha.cherian@iswkoman.com

🗨 We are there for you!

Check Suitability

Career Library

Contact Us

Comprehensive Career Counselling by Expert

Explore and Find out your Most Suitable Career Path Out of 20 Career Clusters,
160 + Career Paths and 3000+ Occupations

Start Career Assessment for Students

Start Career Assessment for Professionals

<https://indianschool.edumilestones.com>



INDIAN SCHOOL WADI KABIR INTERNATIONAL



GLIMPSES OF THE EVENTS ORGANISED BY TEAM ABLE



27.10.22
ISWKI STUDENT COUNCIL LEADERSHIP WORKSHOP
ABLE TEAM AND STUDENT COUNCIL TEAM



ADOLESCENT AWARENESS PROGRAMME ISWKI

23.9.22



ANTI BULLYING AWARENESS WEEK AT ISWKI WITH TEAM A.B.L.E
13.11.22-17.11.22



INDIAN SCHOOL WADI KABIR INTERNATIONAL





THE TEAM



Mrs. Rohini Swaminathan
School Counselor



Mrs. Rashmi Patankar
Special Educator & Counselor
Dept. In-charge @ISWK/ISWKI



Mrs. Neha Cherian
School Counselor



Ms. Amal Kasmani
School Counselor & Special Educator



Mrs. Aanchal Sethi
School Counselor @ ISWKi



Mrs. Shamita Anchan
Special Educator & Counselor

RASHMI PATANKAR

DEPARTMENT IN CHARGE

incharge.able@iswkoman.com

AANCHAL SETHI

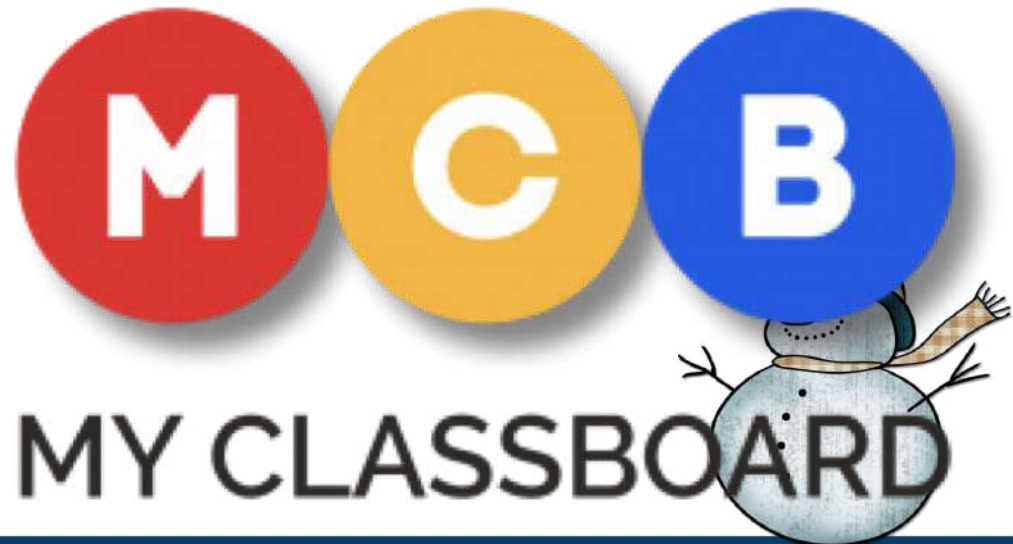
CAREER AND BEHAVIOR
COUNSELOR

sethi.aanchal@iswki.org



UPDATES....

- Academics
- Classwork
- Homework
- Project / Research works





HOLIDAY SCHEDULE

Summer Break :- 6th - June, 2023 to 1ST August, 2023
School begins for learners on 2nd August, 2023

Winter Break :- 17th - December, 2023 to 8th January, 2024
School begins for learners on 9th January, 2024





Principal's Address Mr. D N Rao





For us education is not a goal to be reached but a timeless quest whose every moment is filled with meaning and purpose.

